

# WINDOWS INSTALLATION PHOTO PRICE GUIDE

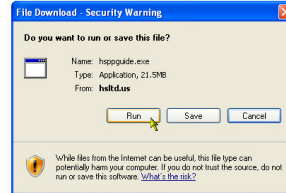
Installation of Photo Price Guide is quite easy if you know what to expect and follow these steps. It should require no more than a couple of minutes.

**Be sure that you're logged in as Administrator.**

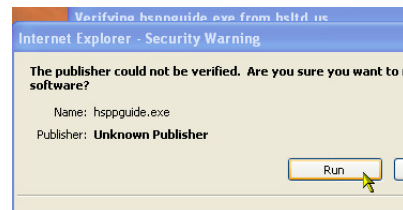
## DOWNLOAD THE SOFTWARE

To download Photo Price Guide, click on the Windows link at <http://HSLtd.us/photo-price-guide/download.html>

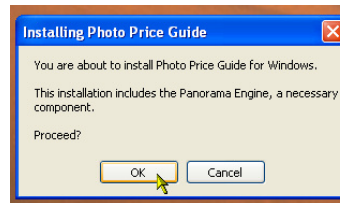
Before the download begins, a window should appear asking if you want to Run or Save the download. In most cases Run is the choice you want to make.



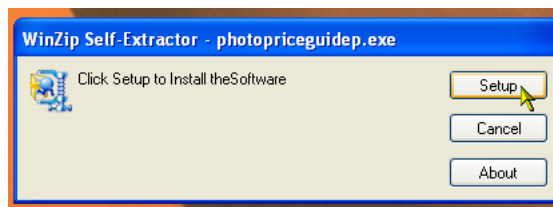
When the download has completed, a warning appears regarding the "unknown publisher". Click on Run in order to continue.



The installer starts by confirming the package that you are about to install.



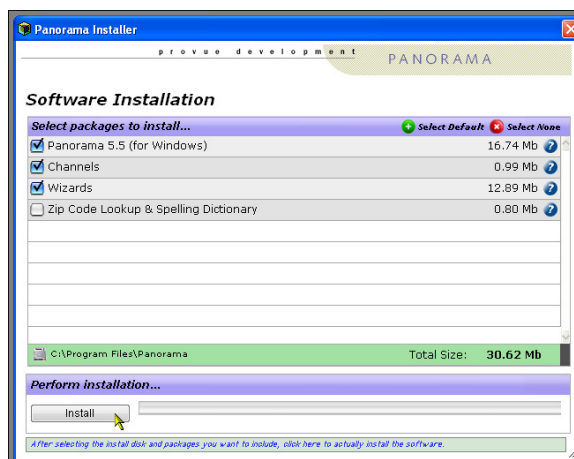
The software then Unzips to your hard drive. It's advised to allow it to use the default settings which sends the installation to your Temp folder.



Once the files are unzipped, there will be a momentary pause after which the Panorama Installer opens on your screen.

Again, we suggest using the default settings for the best results. This will install a Panorama folder in your Program Files folder. (Panorama is the underlying database engine that runs Photo Price Guide and an included part of your licensed package)

Click on Install and both Panorama and Photo Price Guide are installed on your hard drive.

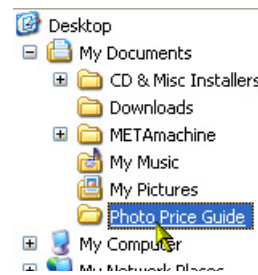


*Note*  
The Panorama engine is installed into your Program Files folder. Photo Price Guide itself is installed in your Documents folder (My Documents). If the installer does readily find your Documents folder it will ask you to select the location.

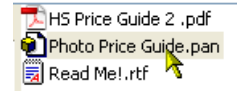
The installer tells you when the Installation is Complete, then Quits.

## F I R S T   U S E

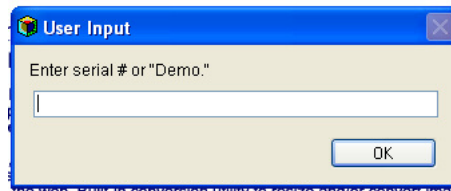
Locate the newly installed Photo Price Guide folder. If you installed it as suggested, it's inside your My Documents folder.



Inside that folder, locate the file named Photo Price Guide and double click to launch it. (See our *Shortcut tip in the Final Notes below*)



If you've purchased a license for Photo Price Guide, enter it when the program launches and offers this window. Otherwise it runs as a Demo until you do enter a valid registration.



Note that the Photo Price Guide PDF documentation is accessed via the Windows menu when the program is running.

## F I N A L   N O T E S

**To add a Shortcut to your Task Bar**, right-click on Photo Price Guide.pan within its folder and drag it to the Task Bar. Then choose Create Shortcut from the options that pop up.

PDF Documentation, is accessible via the Logo's popup menu

Support for Photo Price Guide is available for free via our online forums, accessed by choosing Support in the Logo's popup menu

There is no need to register Panorama or enter any registration information for it in order to use it with Photo Price Guide. Photo Price Guide has a built-in license for Panorama.

If you have InView & StockView, or components of either, you can move Photo Price Guide from its folder to that folder. Up to date versions of Flow Chart will recognize and respond to its presence. Place the Photo Price Guide.pdf in the InView & StockView documentation folder.

To Delete Photo Price Guide from your computer, right-click on the Photo Price Guide folder and chose Delete. Then do the same with the Panorama folder. No further action is necessary.