

WINDOWS INSTALLATION METAMACHINE

FOR USE WITH INVIEW & STOCKVIEW

PANORAMA

METAmachine requires Panorama 5.5 or later and will use your registered copy of Panorama.

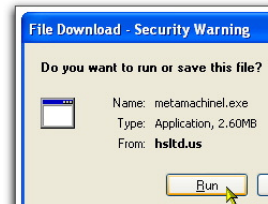
Be sure that you're logged in as Administrator.

DOWNLOAD THE SOFTWARE

To download METAmachine, click on the link for the lite Windows download at <http://HSLtd.us/metamachine/download.html>



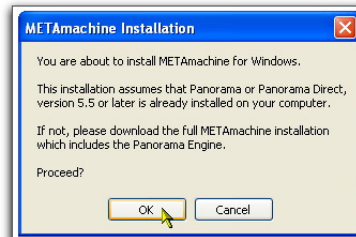
Before the download begins, a window should appear asking if you want to Run or Save the download. In most cases Run is the choice you want to make.



When the download has completed, a warning appears regarding the "unknown publisher". Click on Run in order to continue.



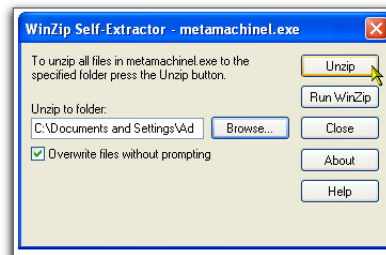
The installer starts by confirming the package that you are about to install.



The installer then lets you choose the location to which the software should be saved. Click on the Browse button and choose your My Documents folder.

When ready, click on Unzip.

The software then Unzips METAmachine to your hard drive and your designated location.



When you're notified that the files are unzipped, click OK and then on the Close button.



Note
It is necessary to have the free Apple QuickTime software installed. See <http://www.apple.com/quicktime/download/>

Windows Installation

CONFIGURATION

Locate the newly installed METAmachine 2 folder. If you installed it as suggested, it's inside your My Documents folder.

Inside the METAmachine 2 folder are four items. The folder and its contents can be used as-is, with no further ado. See Running METAmachine below. *Note* ↗

Or you can incorporate it into your InView & StockView folder. In that case there are a few simple steps involved in integrating the parts.

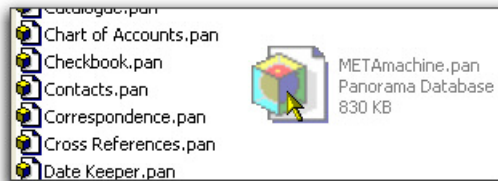
You should know how to open folders and how to drag files from one folder to another.

Note:
If you are upgrading from a past version of METAmachine and you opt to NOT integrate METAmachine with your InView & StockView folder, see the Upgrade Note at the end of this document.

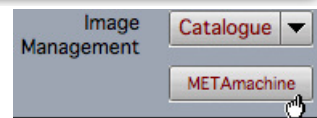
METAMACHINE

Drag METAmachine itself from its folder into your InView & StockView folder.

If you have an older version of METAmachine in the folder, tell your computer that Yes, you want to replace it.



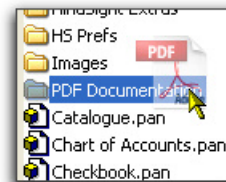
All recent versions of Flow Chart recognize METAmachine and will automatically add a button for METAmachine to your Flow Chart Window.



DOCUMENTATION

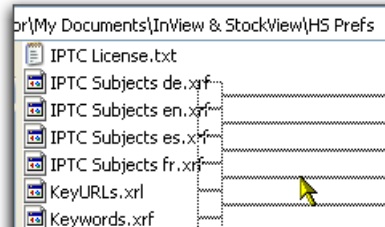
Drag METAmachine.pdf from the METAmachine folder into the PDF Documentation folder, which is within your InView & StockView folder.

Flow Chart then adds this PDF to its PDF Documentation menu.



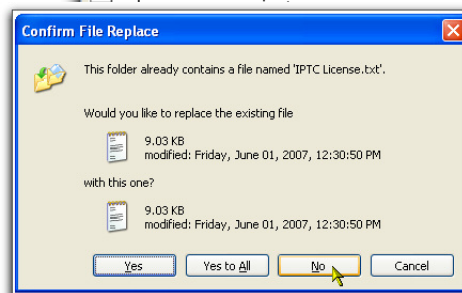
PREFERENCES

Open the HS Prefs folder located inside the METAmachine 2 folder and select all of its contents. Drag them into the HS Prefs folder inside your InView & StockView folder.



Odds are that you have some of these files already and have possibly updated some with your own keywords. You should get messages asking if you want to replace the existing files. In most cases you don't.

Click on No for each of the files that already exists in the folder.



KEYWORD CONVERTER

If you've purchased a license for the third party Controlled Vocabulary keywords, Keyword Converter is the utility for converting and loading those lists into METAmachine. Drag it to your InView & StockView folder if you expect to use it. It can go anywhere, but HS Extras might be a convenient choice.

R U N N I N G M E T A M A C H I N E

To start using METAmachine, locate the file named METAmachine and double click to launch it.

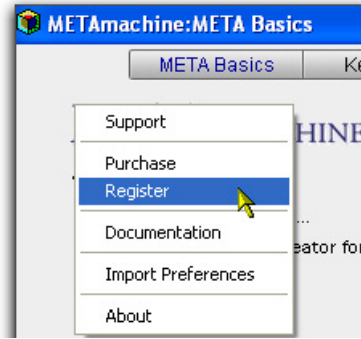
To add a Shortcut to your Task Bar, right-click on METAmachine.pan within its folder and drag it to the Task Bar. Then choose Create Shortcut from the options that pop up.

R E G I S T R A T I O N

Until its registered, METAmachine does everything except write metadata to images.

To purchase a license and/or register METAmachine, click on the METAmachine logo displayed in the META Basics pane.

Make your selection from the popup menu that appears.

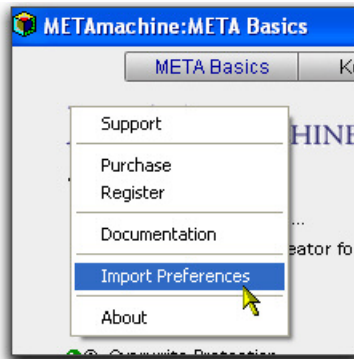


U P G R A D I N G F R O M P A S T V E R S I O N S

If you've chosen to keep METAmachine in its own folder rather than integrate it into your InView & StockView folder, you can still utilize any changes you made or preferences you set in earlier versions.

If you have Captions, Keyword lists or Licenses that you modified and saved in a previous version of METAmachine, you can import them into the new version.

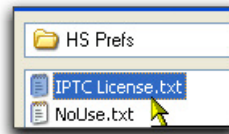
Just click on the METAmachine logo and choose Import Preferences.



Note:
You can also import preferences from StockView. Just navigate to the HS Prefs folder within your InView & StockView folder and highlight any file in that list.

In the resulting dialog window, *navigate to the folder containing your previous version of METAmachine*. Inside that, locate and open the HS Prefs folder. Highlight any file within that folder and click Choose.

Once your preference files are imported, you can delete the entire folder containing your earlier version of METAmachine.



S U P P O R T

Support for METAmachine is available for free via our online forums, accessed by choosing Support in the Logo's popup menu